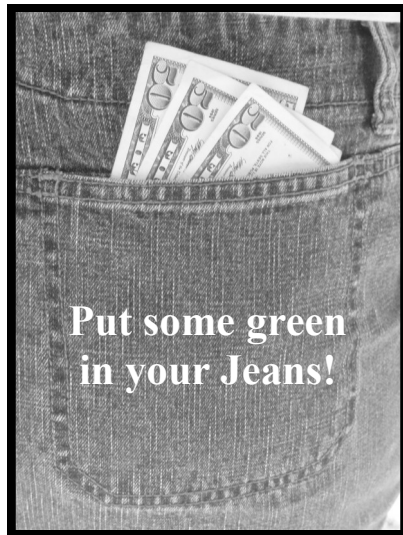


The School to Apprenticeship Programs

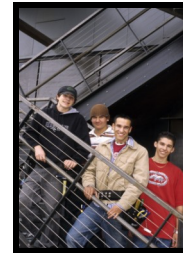
Get Electrified
Frame Your Future
Cutting Edge Technologies



For more information call or write:
The School to Apprenticeship Programs
WorkForce-Central
714 South 27th Street
Tacoma, Washington 98409
253-573-6819
Email: tpoole@workforce-central.com

The School to Apprenticeship Programs

Get Electrified, Frame Your Future, and
Cutting Edge Technologies in
Sheet Metal & HVAC Services



Get Electrified 2004



Get Electrified & Frame Your Future 2005



School to Apprenticeship Class 2006

What is an apprentice?

An apprentice—one who is learning a recognized skilled craft or trade or an occupation under a *skilled* worker for a *specific* amount of time requiring one or more years of classroom instruction and on-the-job training (OJT), prior to being considered a qualified skilled worker (journey level) .

- For example, the School to Apprenticeship Programs are called electrical, carpentry, and sheet metal/HVAC helpers.

What is an apprenticeship?

Apprenticeship programs— combine on-the-job training (OJT) with classroom instruction to train individuals to become skilled trades people. OJT is provided through paid work experience in the field on construction sites, supervised by trades professionals.

Apprenticeship programs come under the guidance of joint apprenticeship committees (J.A.T.C.) comprised of representatives of the employers or the employer association and representatives of the employees. Most classroom training provided by the program often takes place at the local J.A.T.C. or at community/technical college campuses.

Most apprenticeships in the building and construction trades take two to five years to complete. After completing all the requirements, including assessment and drug testing, the apprentice “journeys out” and is then considered a journey-level trades person.

- High school or vocational school education is often a prerequisite for entry into an apprenticeship program.
- For entry into most apprenticeships, one must be eighteen years of age.
- Apprenticeship wages start at 40-60 percent of journey-level wage in each trade.
- Wages increase based on hours worked and how one progresses through the apprenticeship.

In most programs, apprentices work on a job site full or nearly full-time and attend class as determined by their J.A.T.C and/or employer. Classroom schedules vary by trade and by year of the apprenticeship; some students may attend school one day/night a week, some may attend on the weekend, and others may attend classes quarterly.

Why should Women and Minorities* consider a career in Construction ?

- In apprenticeship programs, one can earn while you learn!
- The average salary in traditional occupations for women is \$23,000 per year.
 - The average salary in construction careers is \$45,000 per year.
- ***In construction and the trades, every person has an opportunity for advancement.***



* Worksource Pierce and its partners are equal opportunity employers and providers of employment and training services. Auxiliary aides and services are available upon request to persons of disability. WA Relay Services 1.800.833.6384.

For More Information Call 253-573-6819

School to Apprenticeship Programs

How do you get started?

- Select the trade that you are interested in; carpentry, electrical or sheet metal/HVAC services.
- Write or call to receive a brochure and/or application for the program you are interested in.
 - Get Electrified, Electrical Pre-Apprenticeship*
 - Frame Your Future, Carpentry Pre-Apprenticeship*
 - Cutting Edge, Sheet Metal Pre-Apprenticeship*
- Talk to school instructors and counselors for letters of recommendation and to verify you can participate in program.
- Order your school transcript.
- Order your attendance records.
- Turn in the application, letter of recommendation, a copy of your transcript and attendance records before the last day of February by 5:00 p.m.

If you feel you need help completing the application form or need more guidance in the application process, contact Trudy Poole at 253.552.2542.



The School to Apprenticeship Programs students volunteer & participate in Construction Career Day.

(Construction Career Day 2008)

For More Information Call 253-573-6819

What is a pre-apprenticeship?

Pre-apprenticeship programs—are programs that combine On the job training with classroom instruction that focuses on both an introduction to a skilled trade and introduction to the development of professional skills such as work ethics and conflict resolution.

The School to Apprenticeship program is designed for juniors in high school with an opportunity to move into an apprenticeship program. Your high school diploma is required to apply for the next level as well as successful completion of the School to Apprenticeship program.

- The school to apprenticeship programs, Get Electrified, Frame Your Future, and Cutting Edge Technologies are examples of pre-apprenticeship programs.



School to Apprenticeship Programs

Selection Criteria for the School to Apprenticeship Programs

Application process—The School to Apprenticeship programs application process requires submitting an application, a letter of recommendation, current high school transcript and attendance records.

Applications are reviewed and once the applications make it through the pre-screening process, potential applicants are required to attend:

- **Employability Class:** is a pre-screening tests for construction aptitudes and student employability assessment.
- **Interview Preparation Class:** prepares applicants for a panel interview with classroom training that includes mock interviews and peer review.
- **Program Meeting:** selected applicants will attend an information session about the rigors of the School to Apprenticeship programs.
- **Orientation:** detailed program information and what it will take to successfully complete their pre-apprenticeship programs. Students are also introduced to other required paper-work for the programs (WIA)

Letters of Recommendation—The School to Apprenticeship program requires a letter of recommendation to be submitted.

High School Transcript Attendance Records—The School to Apprenticeship program requires the applicant to submit his/her most current high school transcript and current attendance records.

- All School to Apprenticeship programs require a cumulative GPA of 2.5. We gladly accept student's with active IEP's.

Interviews—Once an applicant has been selected to continue, members of the J.A.T.C. and industry partners (business representatives who train the applicants) will conduct panel interviews.

- Applicants will be evaluated on factors such as attitude, motivation, interest in the particular trade, and willingness to accept direction.

Drug Testing —All applicants must pass a pre-employment drug test.

Requirements for the School to Apprenticeship Programs

Age requirements— For the School to Apprenticeship programs, each student is required to be a junior entering their senior year in the fall.

- After the pre-apprenticeship has been completed, students are eligible to apply for entry into an apprenticeship program, almost every apprenticeship program requires applicants to be **18 years or older** to apply.

Valid driver's license— The School to Apprenticeship programs require a valid Washington State driver's license.

- A driver's license is important for the following reasons. **(A)** as an apprentice will need to be able to get to and from the job site. If you are 18, you may be asked to run errands during the work day. **(B)** working in the building and construction trades takes place at many different locations, making it difficult to plan around bus lines. **(C)** most building and construction trades apprenticeship programs require a valid driver's license in order to apply.

Good math skills—The School to Apprenticeship programs require each student to successfully complete Algebra I before graduation. Different trades employ different skills, so each apprenticeship program requires different levels of math in order to enter. Some programs simply ask for basic math skills (addition, subtraction, multiplication, division, fractions, and decimals); others require the applicant to show proof that he/she has taken high school geometry or algebra.

Drug and alcohol screening— The School to Apprenticeship programs and many of our employers randomly screen students for drugs and/or alcohol.

- Construction work can be very dangerous and safety is a high priority for all apprenticeship programs. Therefore, all School to Apprenticeship programs require a drug test as part of the employment process.

For More Information Call 253-573-6819

School to Apprenticeship Programs